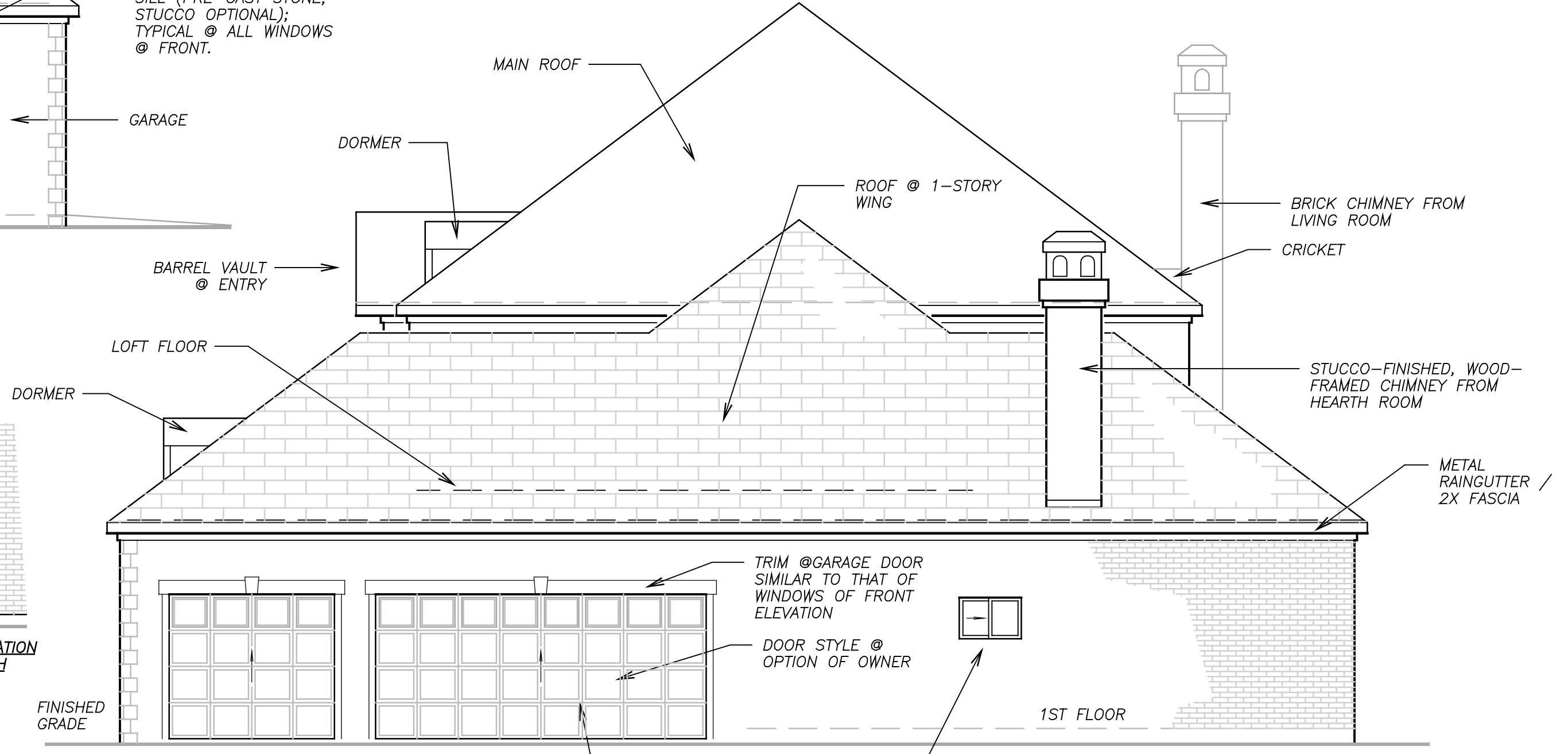
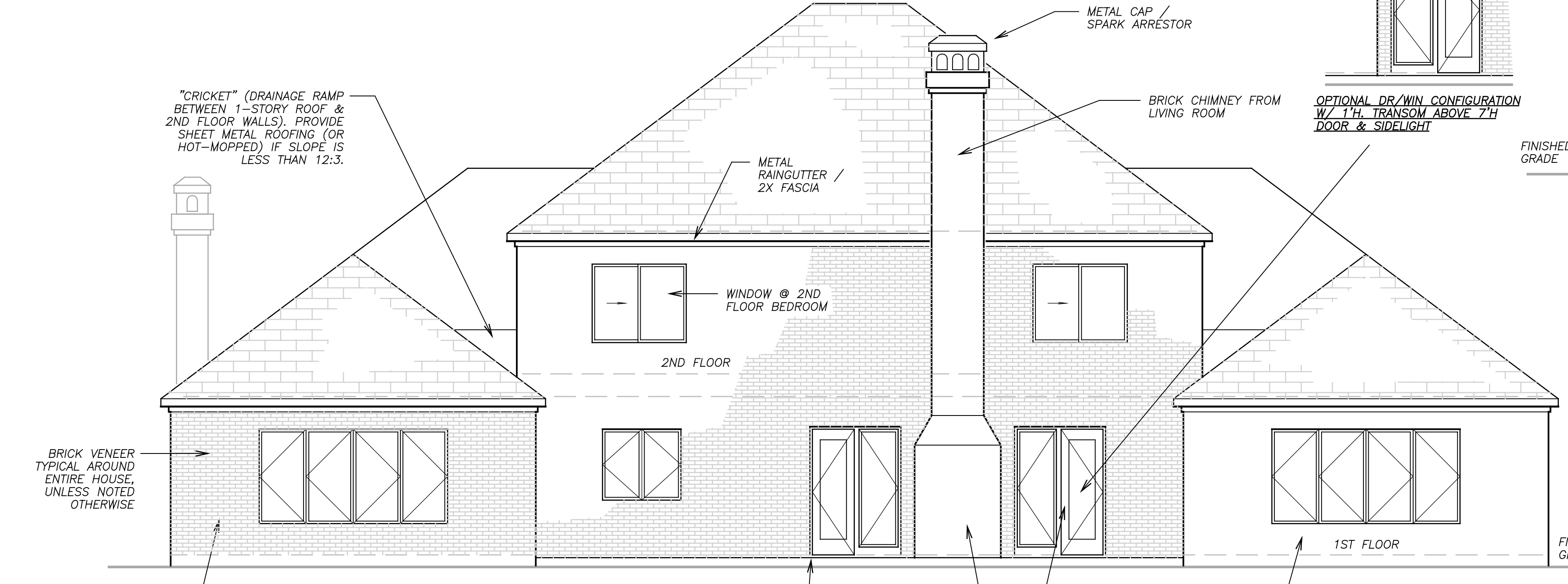


1 FRONT / EAST EXTERIOR ELEVATION
SCALE: 3/16" = 1'-0"

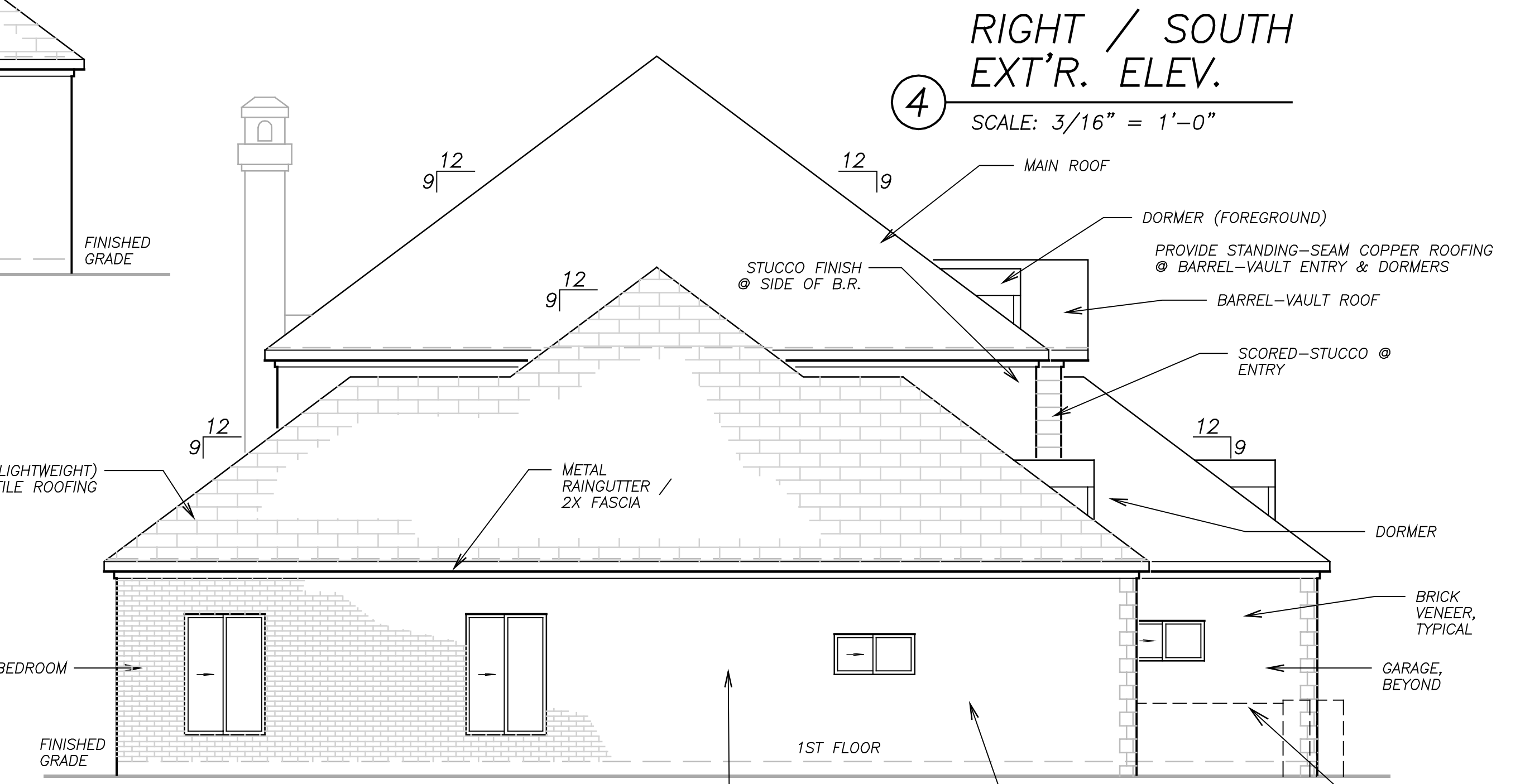
VIEW SHOWN WITH BALLAUSTRADE @ ENTRY TERRACE OMITTED TO SHOW FEATURES @ EXTERIOR WALLS; SEE ALSO: 5/A-4



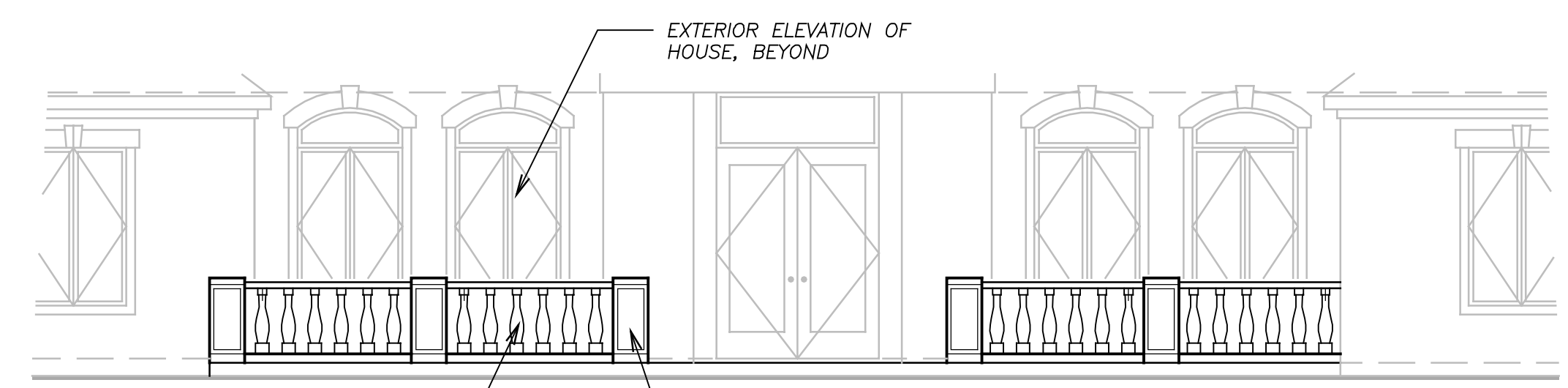
2 LEFT / NORTH EXT'R. ELEV.
SCALE: 3/16" = 1'-0"



3 REAR / WEST EXT'R. ELEV.
SCALE: 3/16" = 1'-0"



4 RIGHT / SOUTH EXT'R. ELEV.
SCALE: 3/16" = 1'-0"



5 BALLAUSTRADE @ ENTRY TERRACE
SCALE: 3/16" = 1'-0"

36" H. CAST-STONE RAIL-&-BALLAUSTRADE SYSTEM. 5" DIA. BALLAUSTERS @ 7" (+/-) O.C. 16" SQ. CAST-STONE PIERS

PROFILE OF BALLAUSTRADE @ ENTRY TERRACE; SEE ALSO: 5/A-4