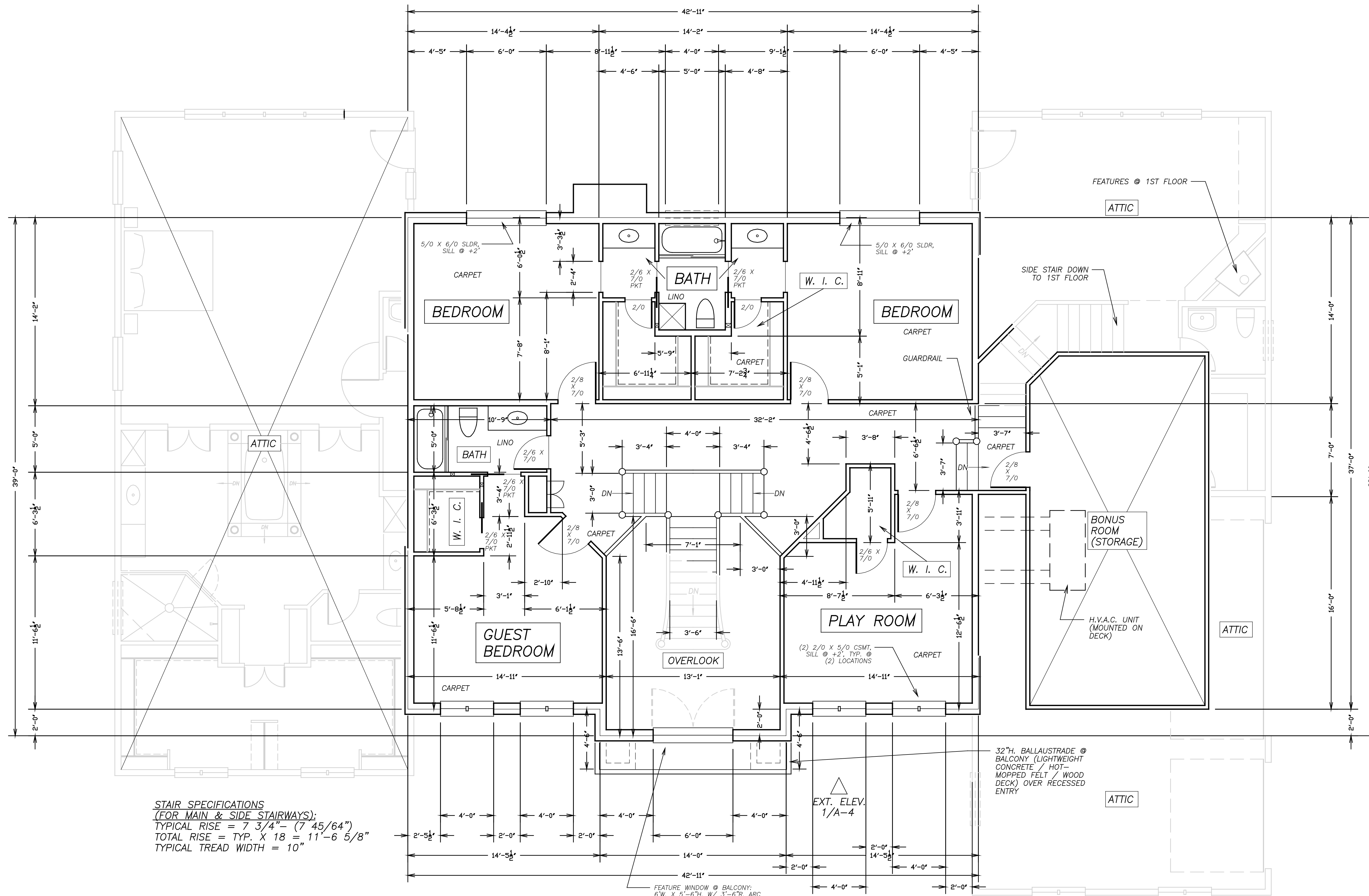


EXT. ELEV.
3/A-4

EXT. ELEV.
4/A-4

EXT. ELEV.
2/A-4



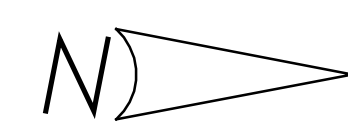
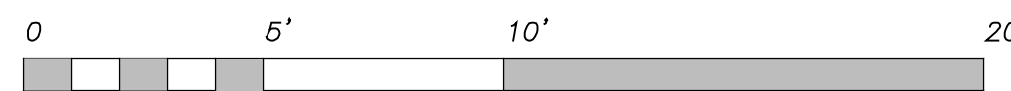
STAIR SPECIFICATIONS
 (FOR MAIN & SIDE STAIRWAYS):
 TYPICAL RISE = $7 \frac{3}{4}"$ - ($7 \frac{45}{64}"$)
 TOTAL RISE = TYP. X 18 = $11'-6 \frac{5}{8}"$
 TYPICAL TREAD WIDTH = 10"

+9' CEILING TYPICAL @ 1ST FLOOR

**SECOND FLOOR
 ARCH'L. PLAN**

1 SCALE: $1/4" = 1'-0"$

FEATURE WINDOW @ BALCONY:
 6'W. X 5'-8"H. W/ 3"-Ø R. ARC
 CENTERED 2' ABOVE SILL.
 SILL @ +13'-6" ABOVE 1ST FLR.
 FIXED.



32"H. BALLAUSTRADE @
 BALCONY (LIGHTWEIGHT
 CONCRETE / HOT-
 MOPPED FELT / WOOD
 DECK) OVER RECESSED
 ENTRY