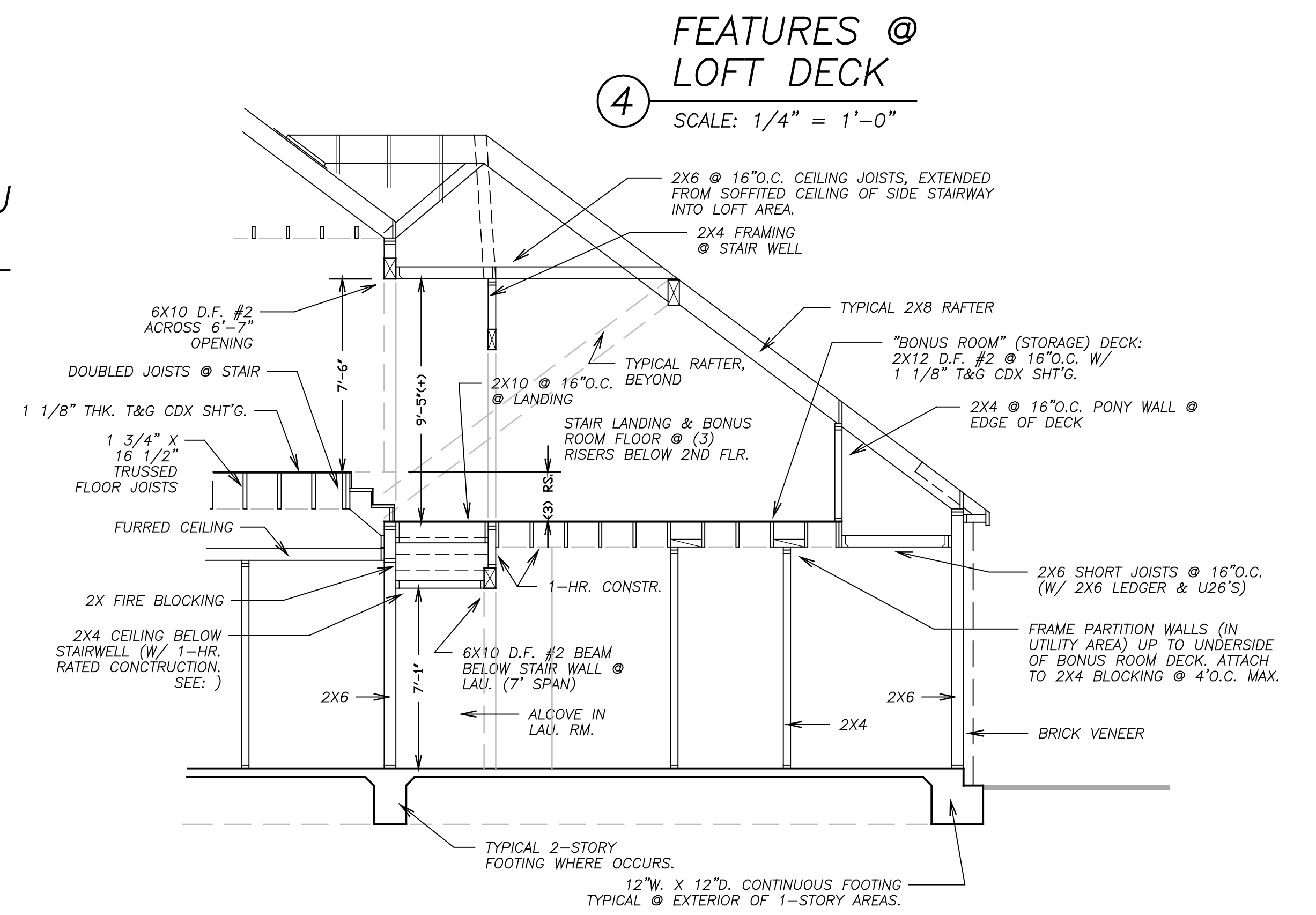
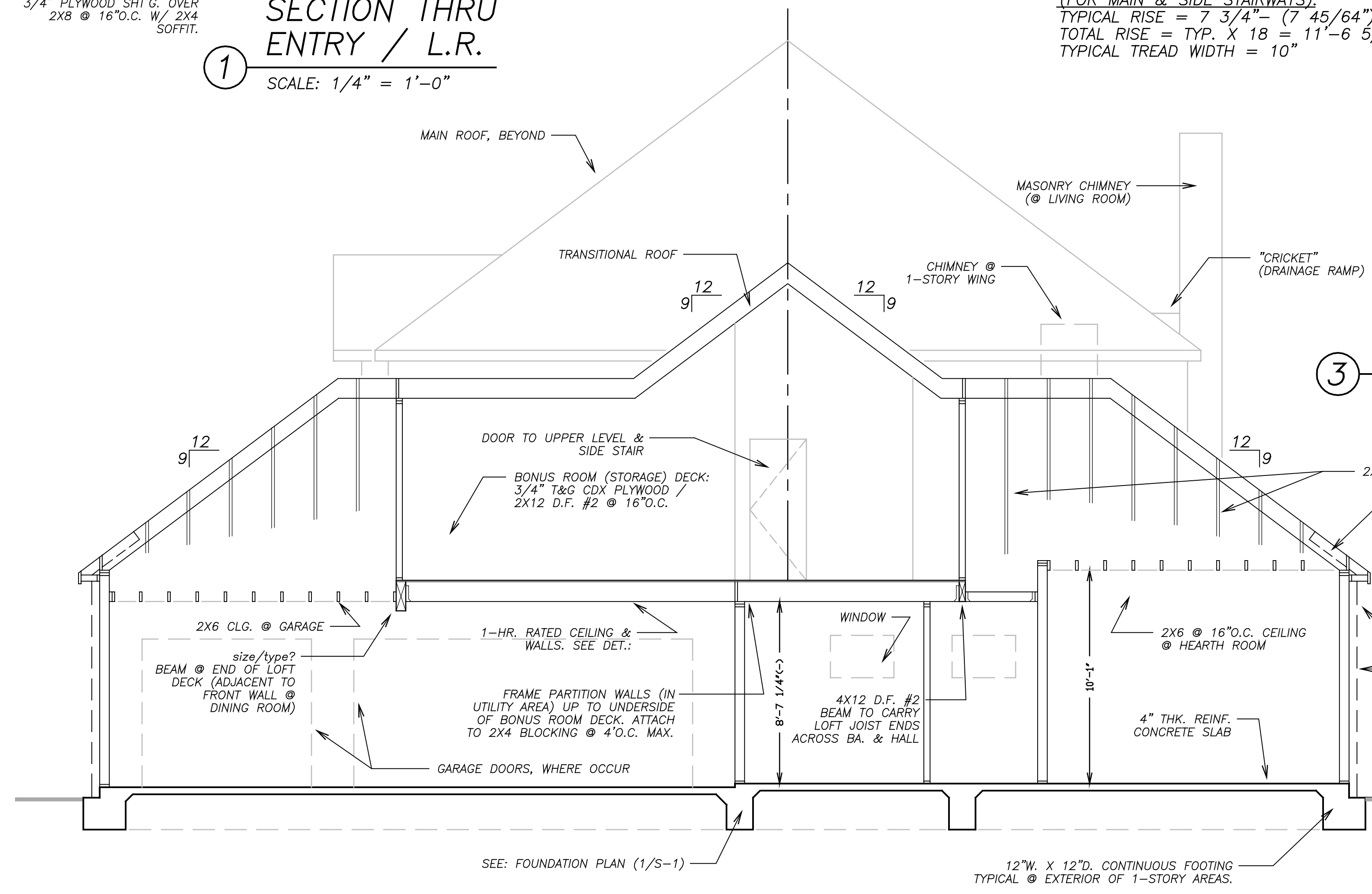


STAIR SPECIFICATIONS (FOR MAIN & SIDE STAIRWAYS):
TYPICAL RISE = 7 3/4" (7 45/64")
TOTAL RISE = TYP. X 18 = 11'-6 5/8"
TYPICAL TREAD WIDTH = 10"



PRODUCED BY AN AUTODESK EDUCATIONAL PRODUCT