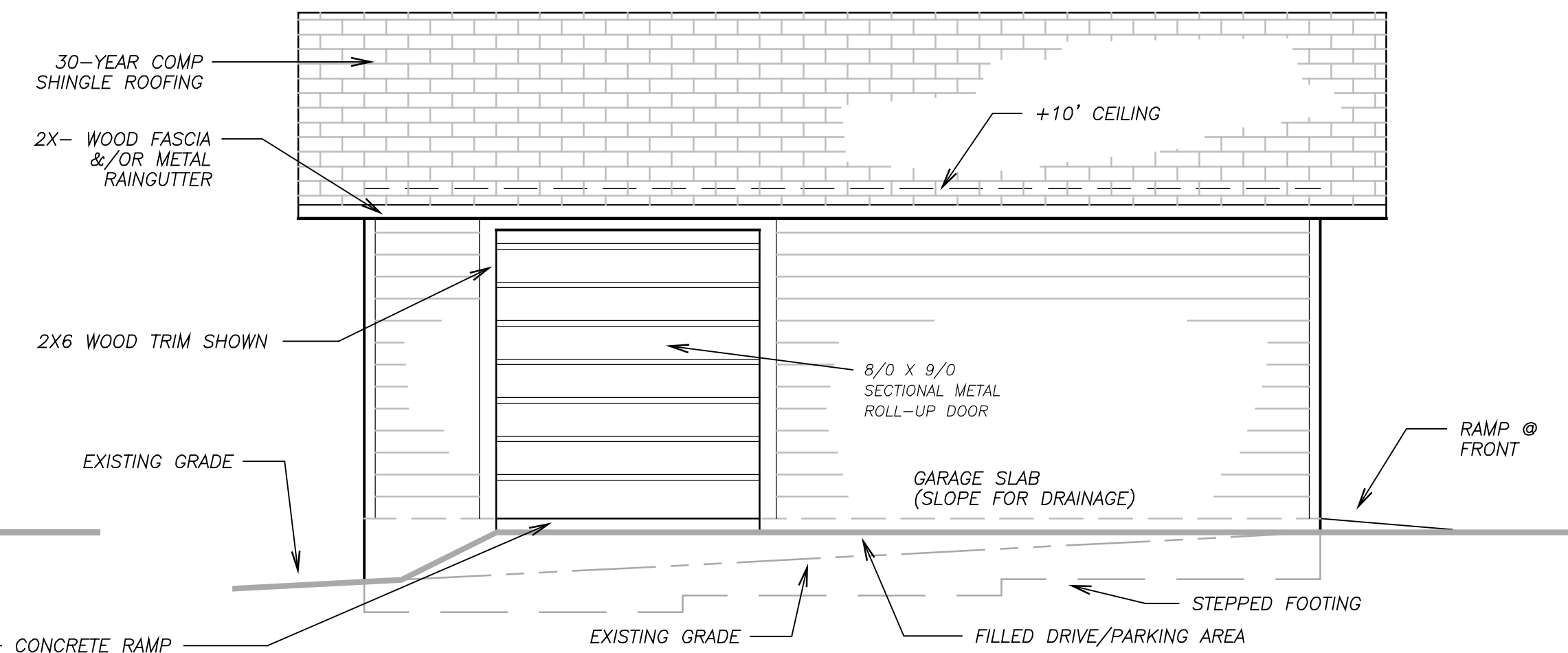
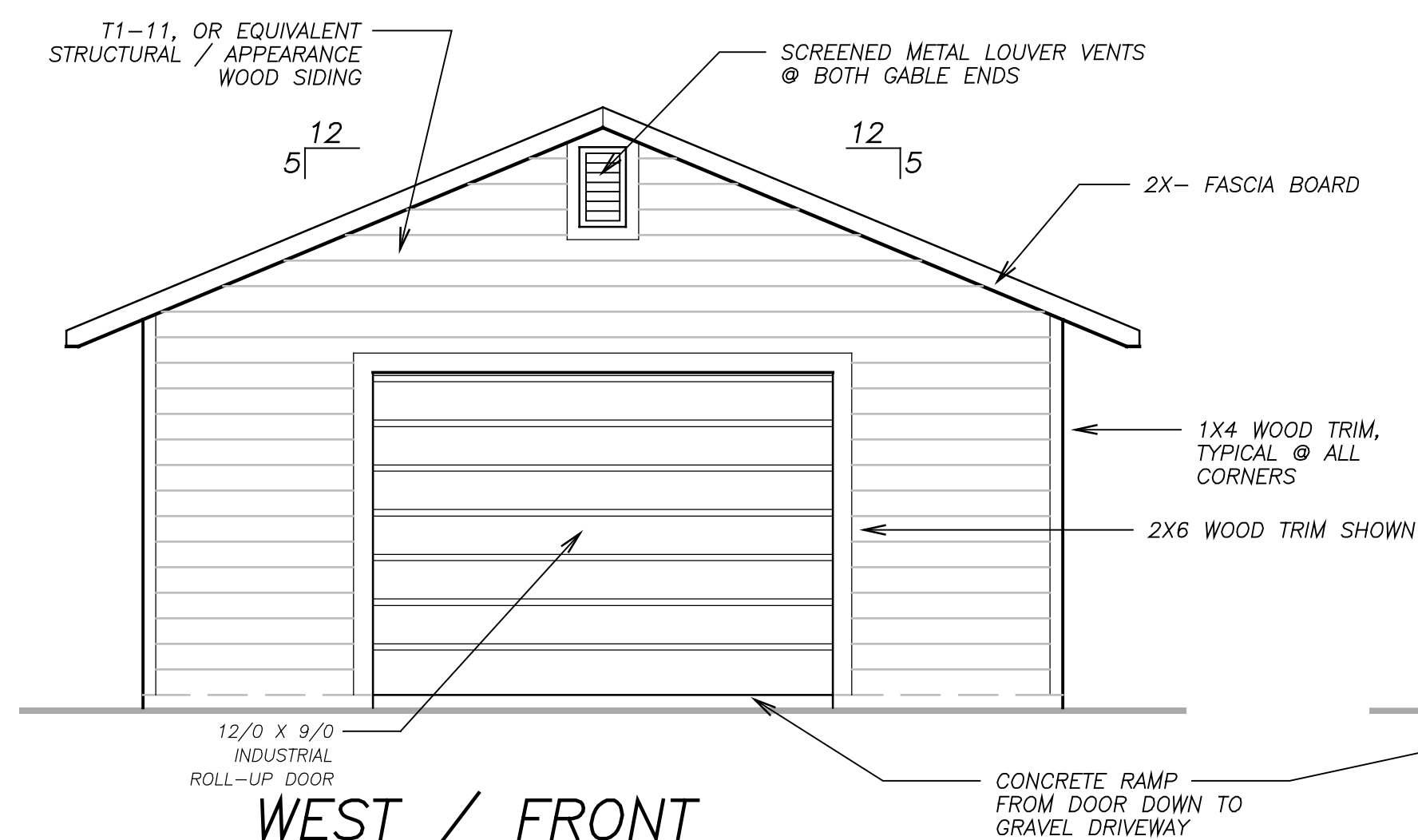


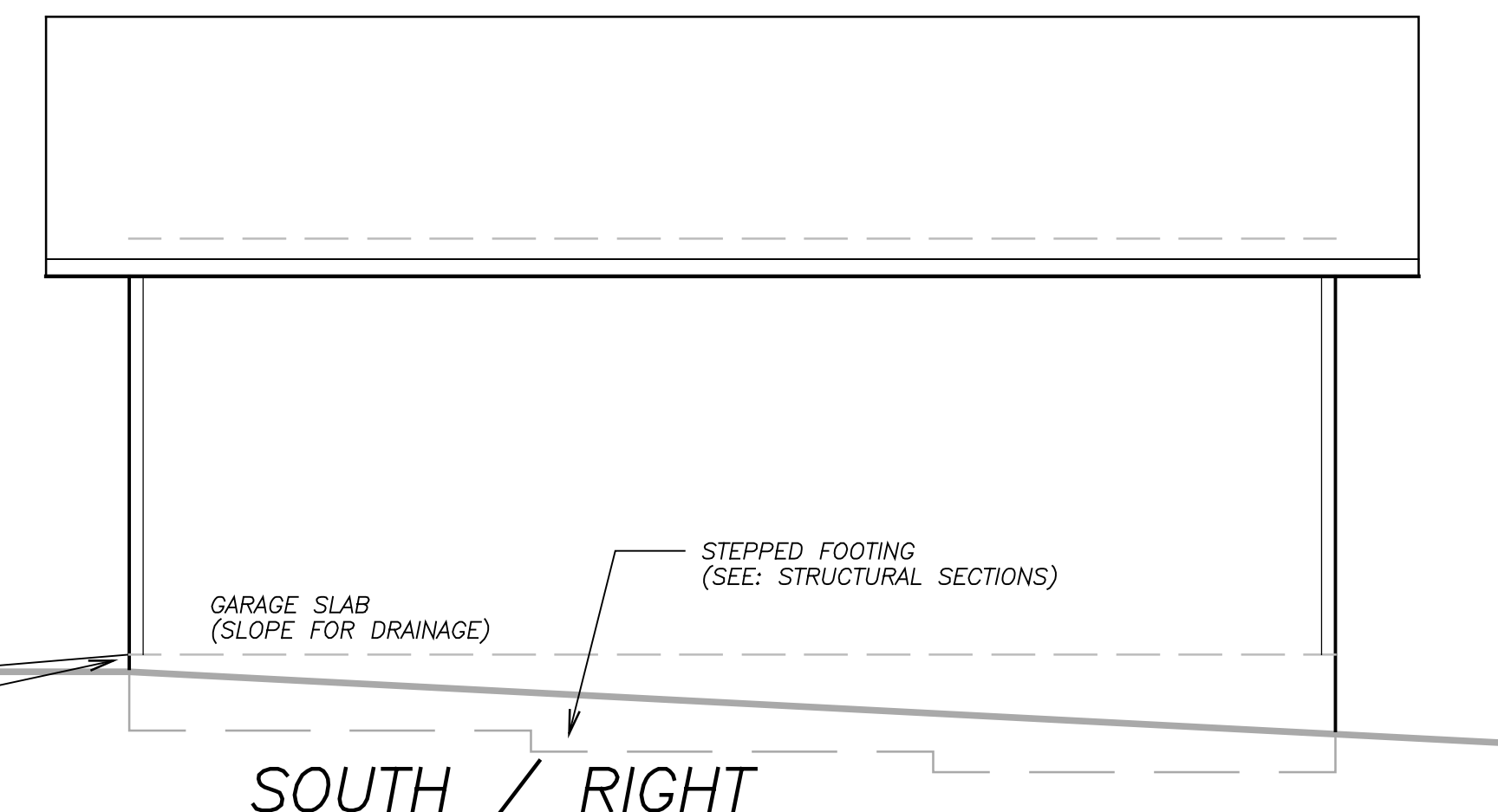
① EAST / REAR  
EXTERIOR ELEVATION  
SCALE: 1/4" = 1'-0"



② NORTH / LEFT  
EXTERIOR ELEVATION  
SCALE: 1/4" = 1'-0"



③ WEST / FRONT  
EXTERIOR ELEVATION  
SCALE: 1/4" = 1'-0"



④ SOUTH / RIGHT  
EXTERIOR ELEVATION  
SCALE: 1/4" = 1'-0"