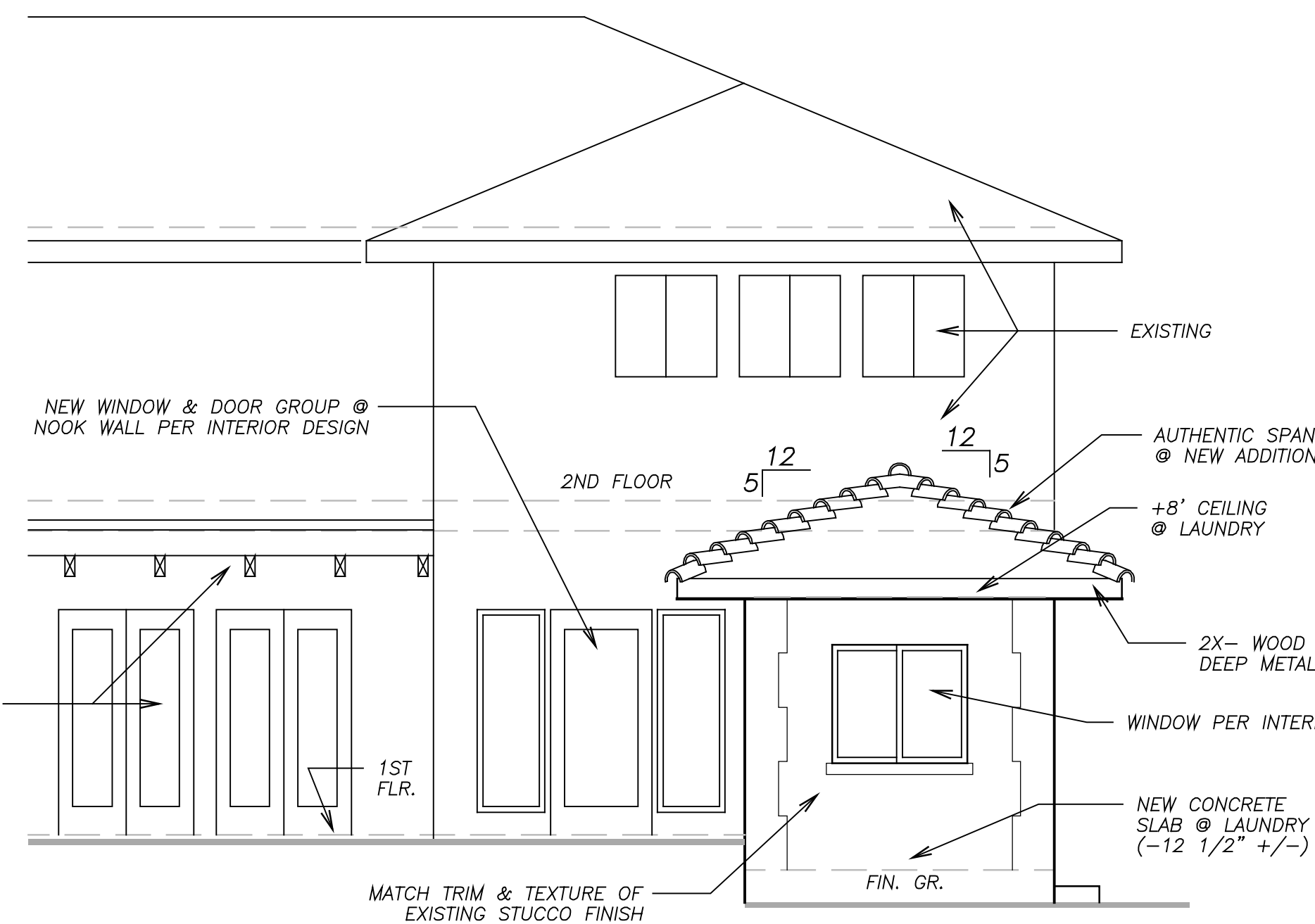
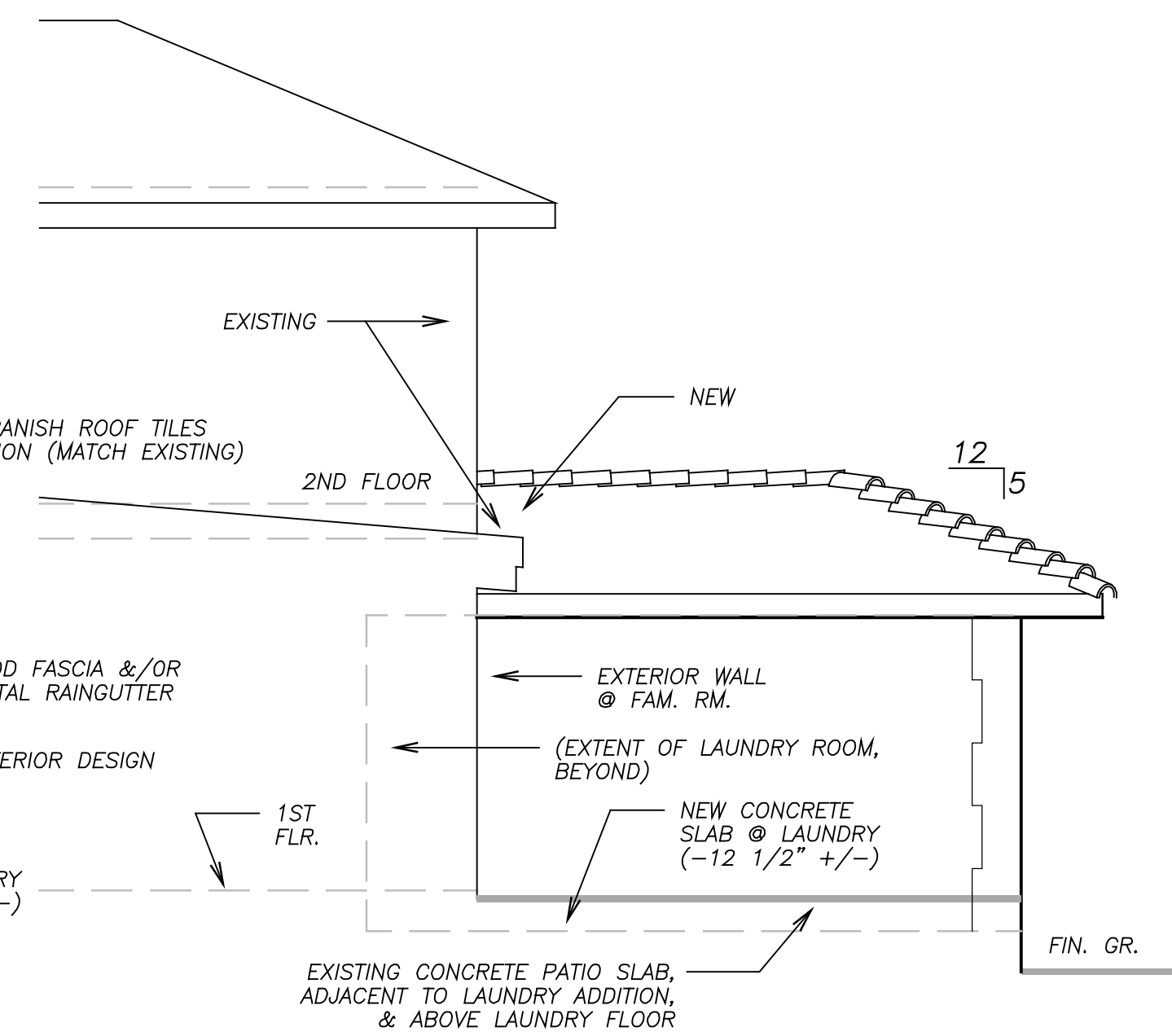


③ PARTIAL EXTERIOR
ELEVATION FROM NORTH
SCALE: 1/4" = 1'-0"



② PARTIAL EXTERIOR
ELEVATION FROM EAST
SCALE: 1/4" = 1'-0"



① PARTIAL EXTERIOR
ELEVATION FROM SOUTH
SCALE: 1/4" = 1'-0"