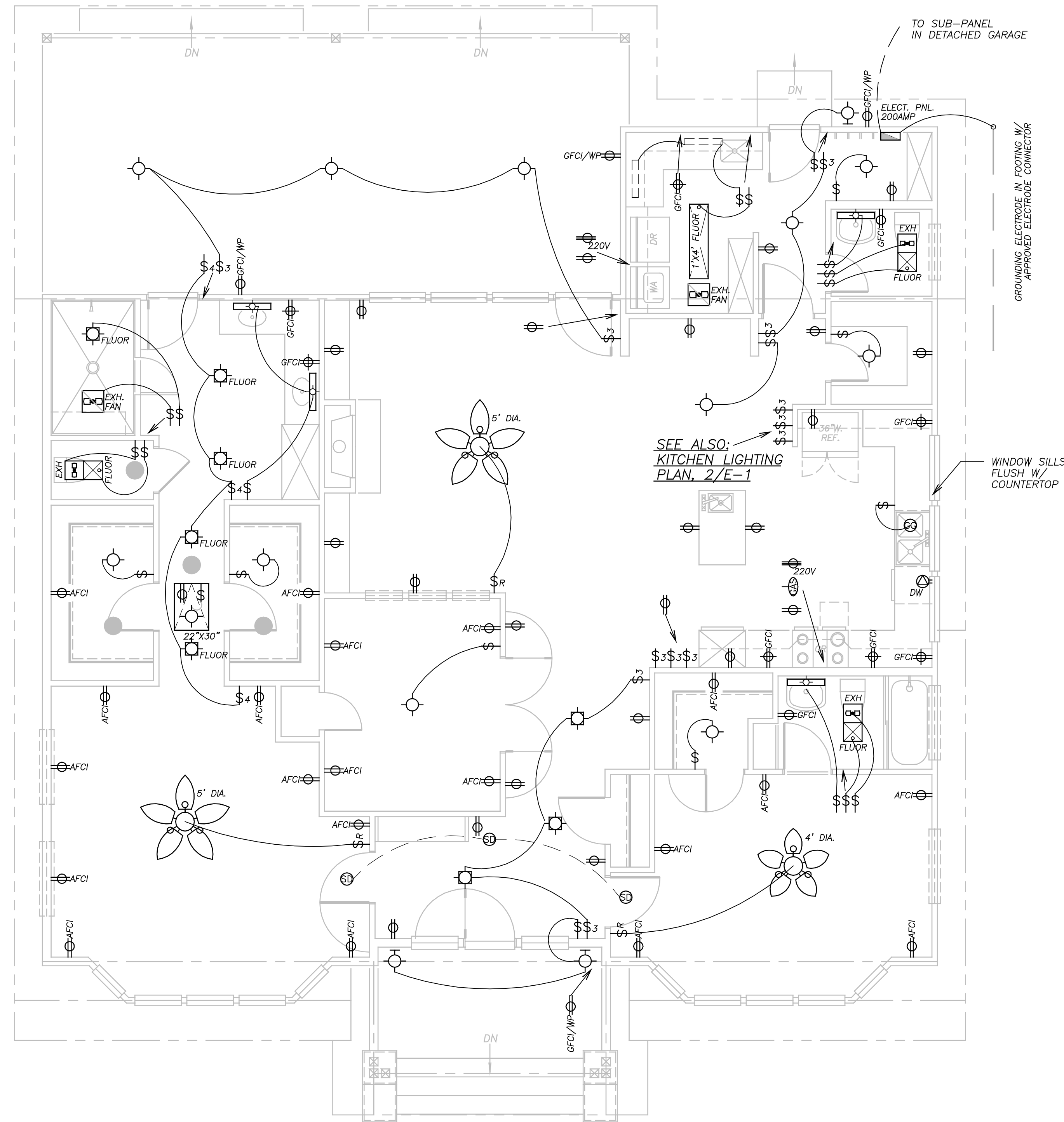


ELECTRICAL LEGEND

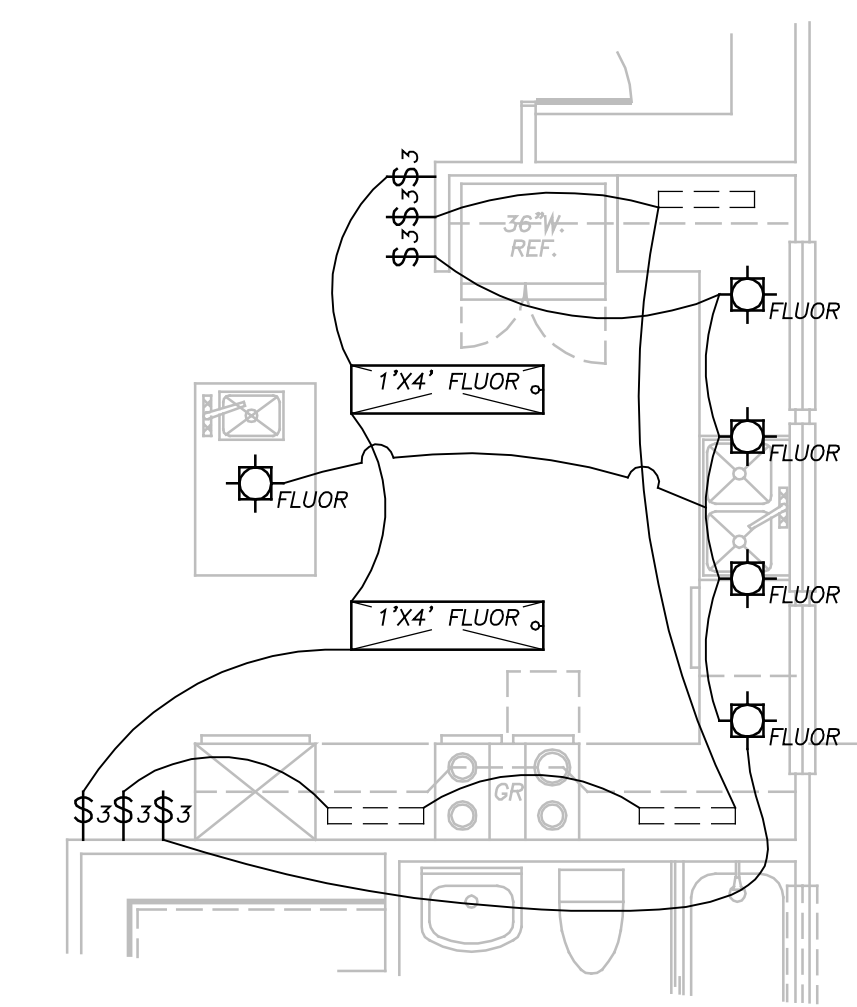
- \$ STANDARD SINGLE-POLE SWITCH
- \$R \$D RHEOSTAT/DIMMER SWITCH
- \$3 THREE-POSITION SWITCH
- \$4 FOUR-POSITION SWITCH
- \$WP WATERPROOF (OUTDOOR) SWITCH
- \$110V STD. 110V DUPLEX OUTLET
- \$110V QUAD 110V OUTLET
- \$110V "HALF-HOT" (SWITCHED) OUTLET
- \$110V ABOVE-COUNTER 110V DUPLEX OUTLET
- \$GFI "GROUND FAULT INTERRUPTER"
- \$220V 220V OUTLET (RANGE/OVEN/WELDING)
- \$WP WATERPROOF (EXTERIOR) 110V DUPLEX FLOOR-MOUNTED OUTLET
- \$GAS GAS COCK (RANGE/OVEN/DRIER/WTR. HTR.)
- \$DISHWASHER DISHWASHER OUTLET
- \$INCAN INCANDESCENT SURFACE-MT. CLG. FIXTURE
- \$RECESSED INCANDESCENT ("CAN-LIGHT")
- \$FLUOR FLOURESCENT SURFACE MOUNT
- \$RECESSED FLUORESCENT
- \$FLUOR MOUNTS BELOW KITCHEN UPPER CABINET
- \$FLUOR FLUORESCENT BATHROOM FIXTURE
- \$WALL WALL SCONCE
- \$EXTERIOR EXTERIOR LIGHT
- \$SPOT EXTERIOR LIGHT (SPOT)
- \$SD SMOKE DETECTOR (CLG.-MTD.)
- \$GARBAGE GARBAGE GRINDER (SINK-MTD.; 110V)
- \$HOSE "HOSE BIB"
- \$THERM THERMOSTAT
- \$PUSH-BUTTON PUSH-BUTTON (DOORBELL)
- \$OS OCCUPANCY SENSOR
- \$MS MOTION SENSOR

ELECTRICAL PLAN

1 SCALE: 1/4" = 1'-0"



NOTE:
H.V.A.C. UNIT & WATER
HEATER IN ATTIC



KITCHEN LIGHTING PLAN

2 SCALE: 1/4" = 1'-0"