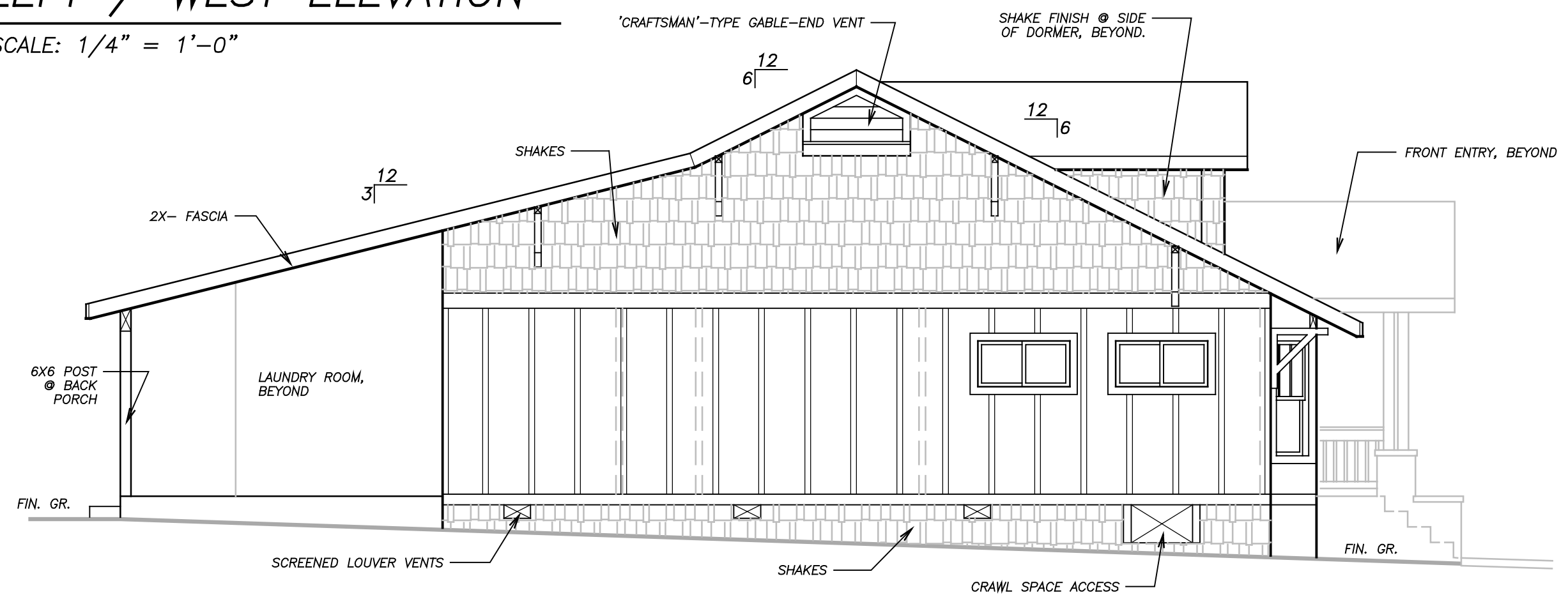
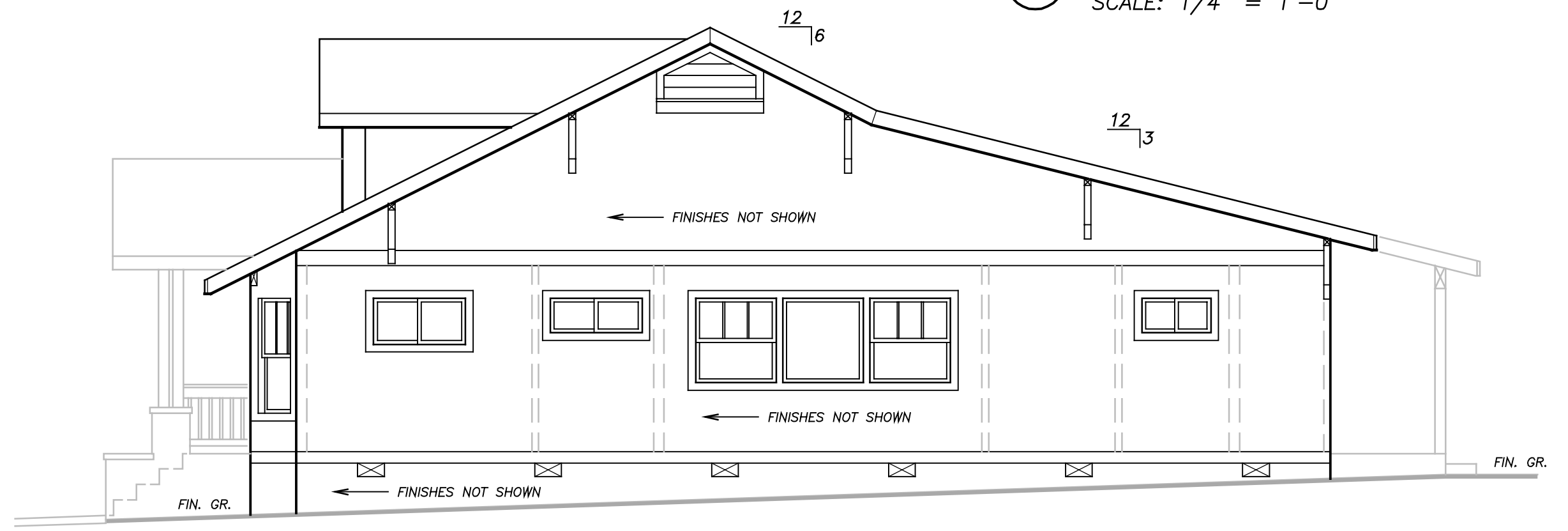


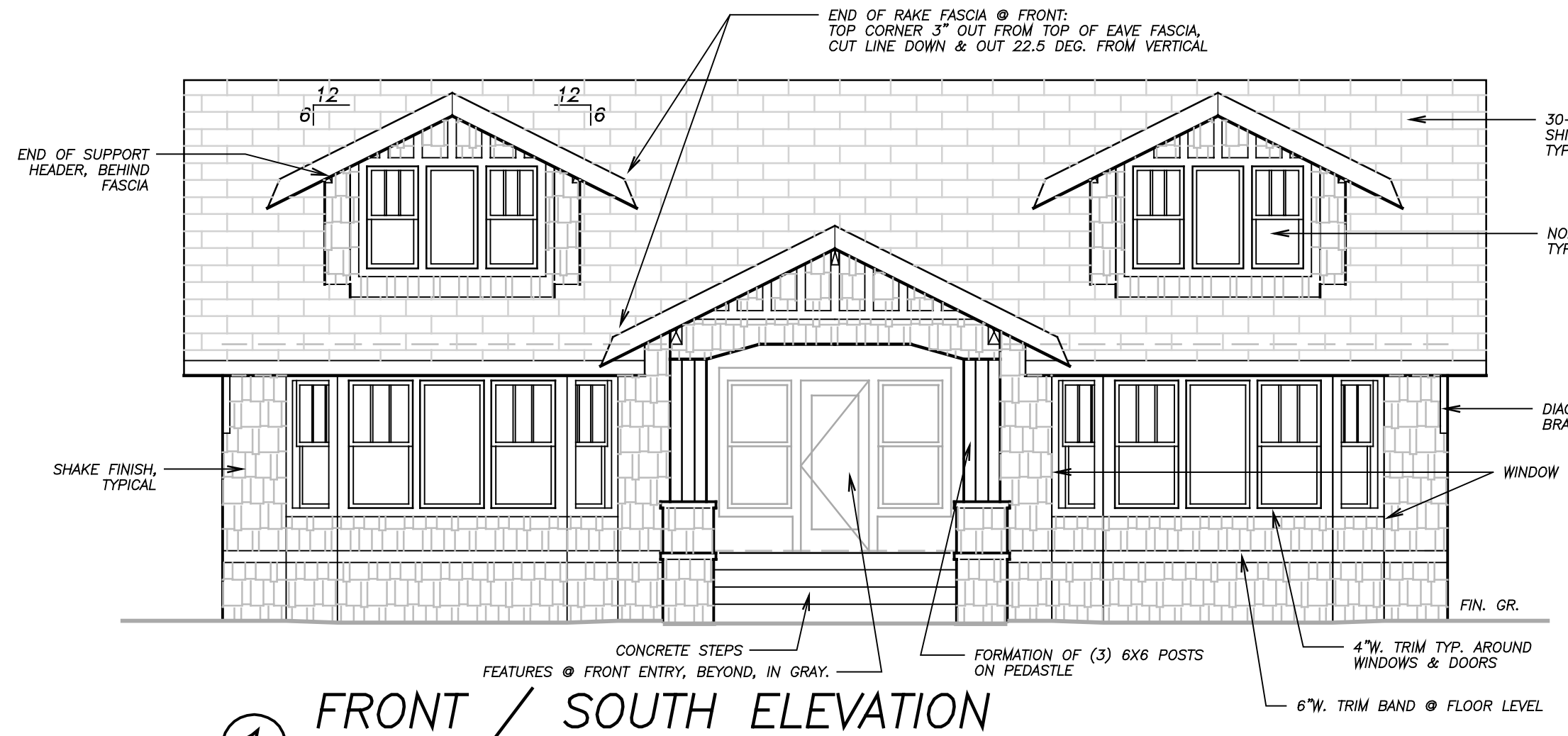
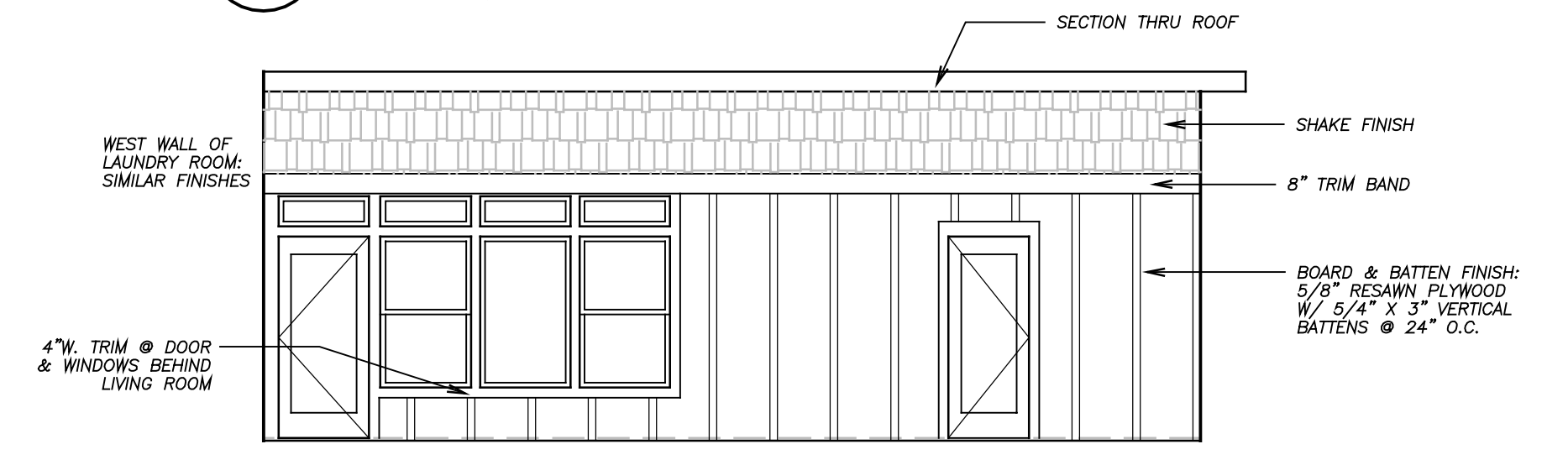
4 LEFT / WEST ELEVATION
SCALE: 1/4" = 1'-0"



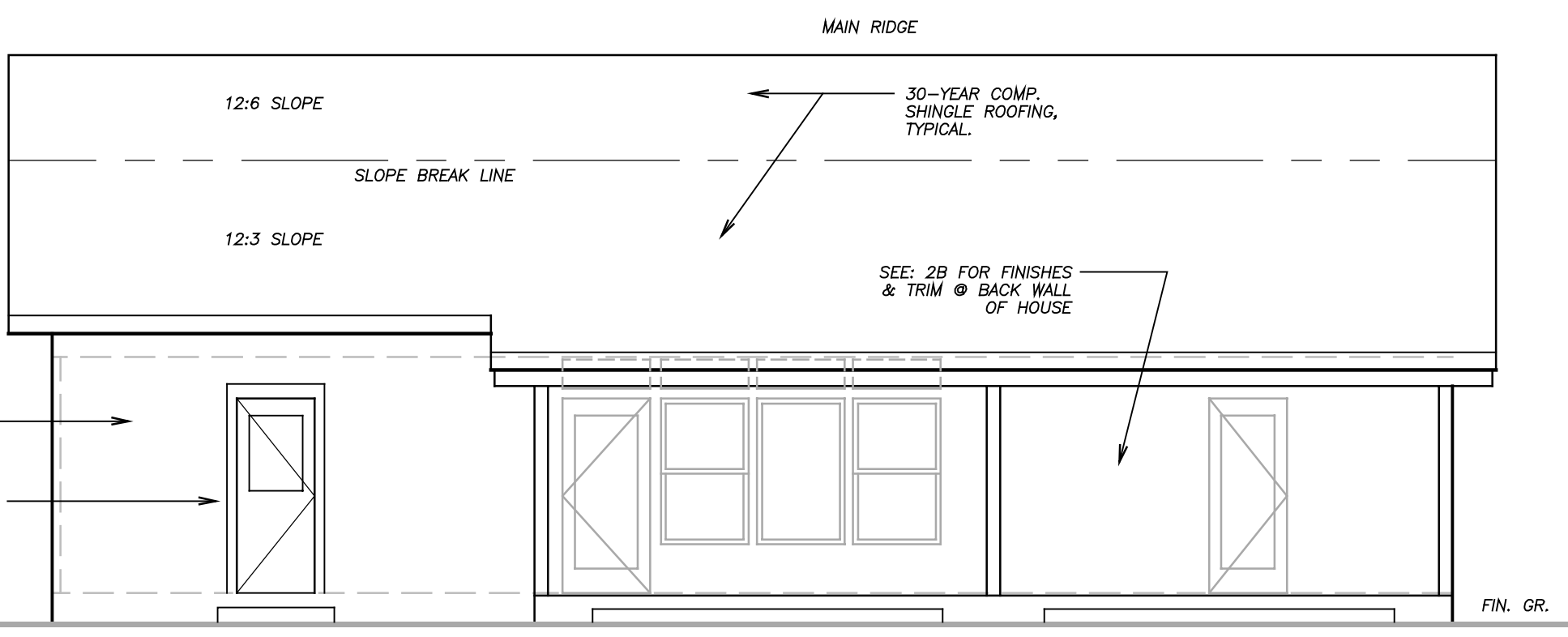
3 RIGHT / EAST ELEVATION
SCALE: 1/4" = 1'-0"



2b PARTIAL ELEV. @ BACK PORCH
SCALE: 1/4" = 1'-0"



1 FRONT / SOUTH ELEVATION
SCALE: 1/4" = 1'-0"



2a REAR / NORTH ELEVATION
SCALE: 1/4" = 1'-0"