

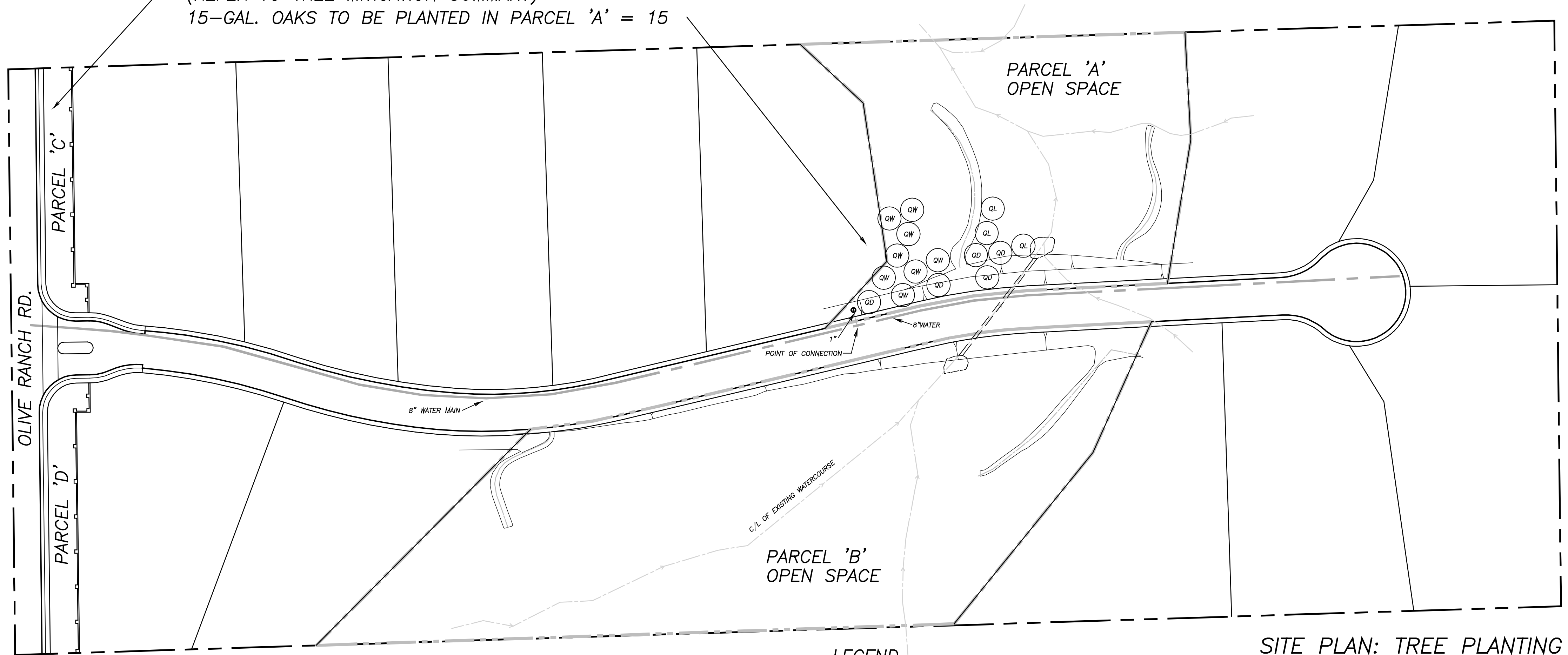
MONITORING SCHEDULE:

A: FIRST YEAR
 1. OBSERVE PLACEMENT OF PROPOSED TREES.
 2. SEVEN SITE VISITS; ONCE IN LATE WINTER;
 MONTHLY IN SPRING; FILE REPORT TO PLACER
 COUNTY PLANNING DEPARTMENT.

B: YEAR TWO
 1. MONITOR GROWTH; ADVISE ON FERTILIZING, PRUNING,
 & RE PLACEMENT. FOUR SEASONAL SITE VISITS.
 REPORT TO PCPD.

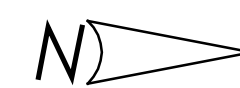
C: YEARS THREE, FOUR, & FIVE
 1. THREE VISITS PER YEAR: SPRING, SUMMER,
 & FALL; YEARLY REPORT TO PCPD.

TREES TO BE MITIGATED = 91
 (REFER TO TREE MITIGATION SUMMARY)
 15-GAL. OAKS TO BE PLANTED IN PARCEL 'A' = 15



LEGEND

- QD QUERCUS DOUGLASII #15
- QL QUERCUS LOBATA #15
- QW QUERCUS WISLIZENII #15



1

**SITE PLAN: TREE PLANTING
 OAK TREE MITIGATION**

SCALE: 1" = 40'